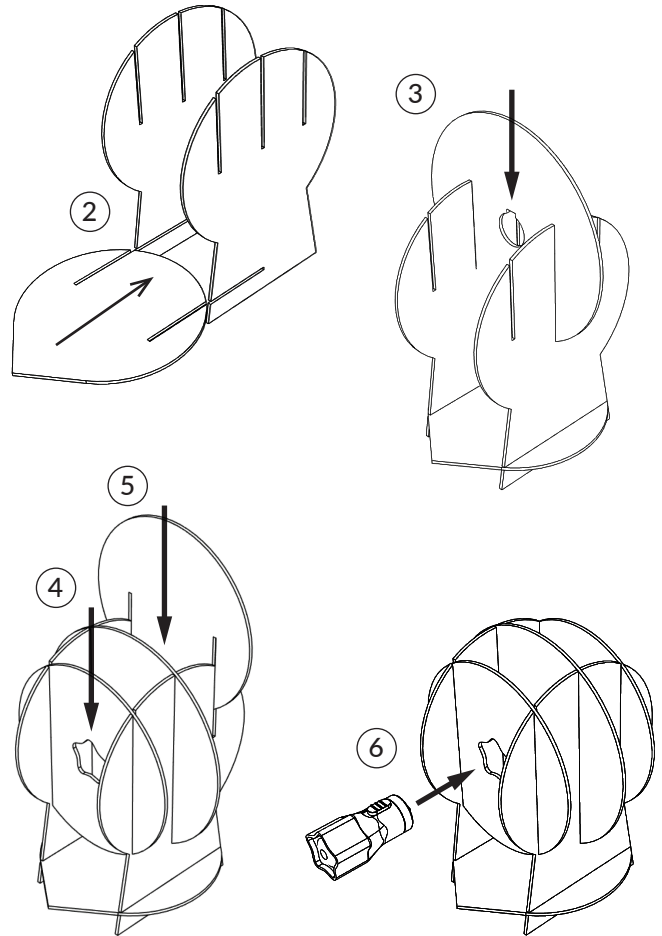


# ASSEMBLY INSTRUCTIONS

## SUN, EARTH, & MOON MODEL

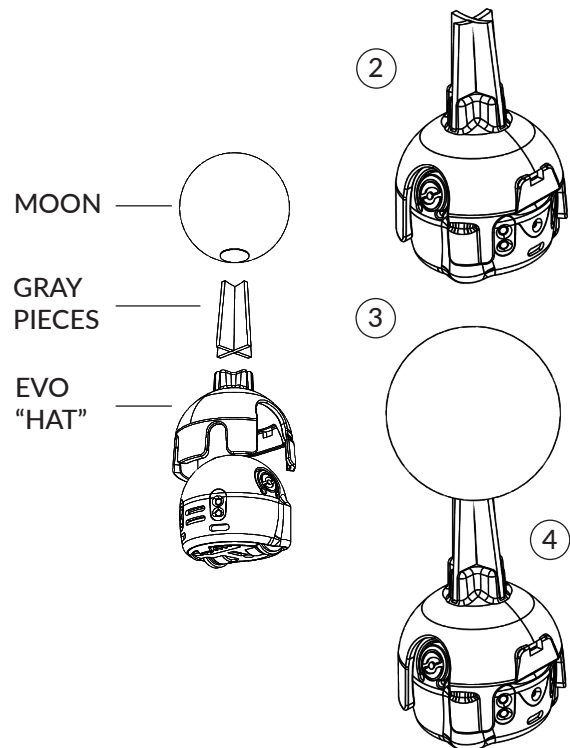
### INSTRUCTIONS FOR SUN MODEL:

1. Punch out all of the black and orange Sun pieces from the board.
2. Slot the black pointed circular piece into the black base of the Sun pieces.
3. Slot the largest of the three remaining Sun pieces into the middle slot of the Sun structure assembled in **step 2**.
4. Slot the Sun piece with the star cut out into the side closer to the pointed side of the base.
5. Slot the remaining piece into the last opening furthest away from the pointed end.
6. Insert the included flashlight into the model through two of the side cutouts for the Sun so that the flashlight is secure and pointing in the same direction as the pointed base.



### INSTRUCTIONS FOR MOON MODEL:

1. Punch out the two small gray pieces and slot them together.
2. Place the clear plastic "hat" on Evo bot. Then insert the assembled gray pieces onto the Evo "hat" slots with the wider side down.
3. Locate the styrofoam Moon model and remove the double sided tape adhesive.
4. Lightly press the Moon model onto the top of the gray base pieces.

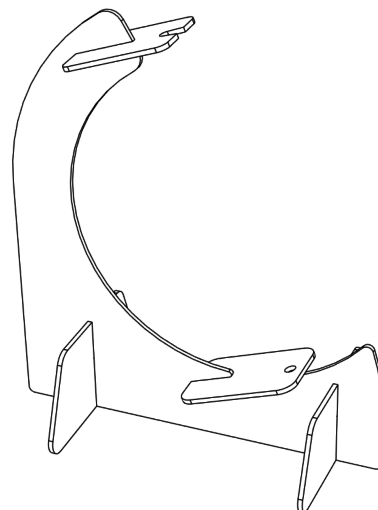
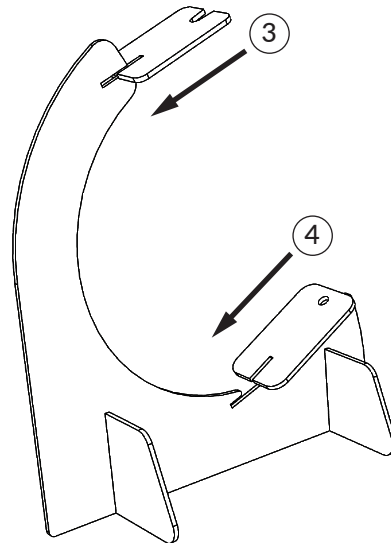
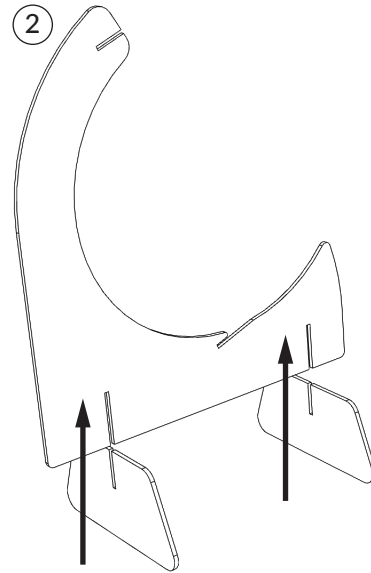


# ASSEMBLY INSTRUCTIONS

## SUN, EARTH, & MOON MODEL

### INSTRUCTIONS FOR EARTH BASE:

1. Punch out the navy blue colored base pieces from the board.
2. Assemble them by placing the two identical feet on the bottom slots.
3. Slot the top bracket (with the open slot into place).
4. Slot the lower bracket in place (the one with the 4mm hole).
5. Set aside.

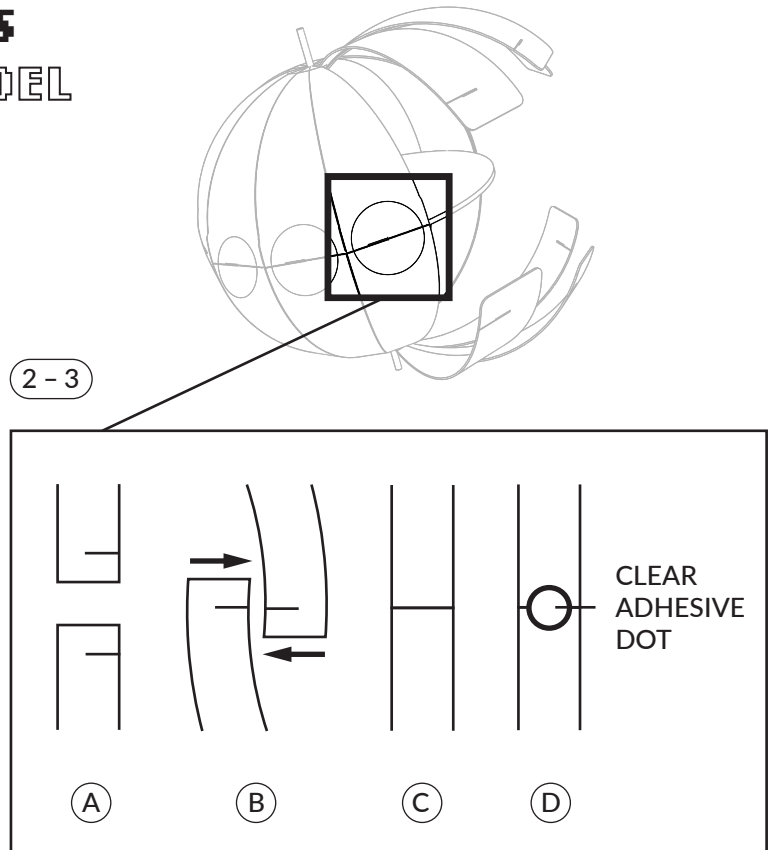


# ASSEMBLY INSTRUCTIONS

## SUN, EARTH, & MOON MODEL

### INSTRUCTIONS FOR EARTH MODEL:

1. To begin, pre-bend the latitude lines down (printed side up).
2. Start on either side of the connected longitudinal piece and begin to slot together half of the corresponding ends of the globe (Please note: the tabs should be **INSIDE** the globe).
3. When the longitude lines are parallel and the slots are fully engaged, use the clear adhesive dots to hold them in place.



4. After constructing five of the eleven pieces of the globe, insert the light blue equator disc.
5. With the disc in place, finish joining the remaining six pieces of the globe.
6. Finally, push the bamboo skewer from top to bottom and rest it in the Earth holder.

